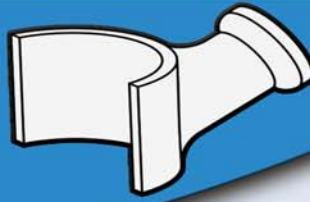


# Rail Removal Tool



YouTube



## PROBLEM

WHEN THIS LADDER WAS ORIGINALLY INSTALLED, THE BUILDER ALLOWED CONCRETE TO PLUG THE DRAIN HOLES IN THE ANCHOR SOCKET. OVER TIME WATER FILLED THE ANCHOR SOCKET AND GALVANIC CORROSION OCCURRED. OVER LONG PERIODS OF TIME CORROSION PRODUCTS BUILT UP BETWEEN THE POOL RAIL AND THE ANCHOR SOCKET, WEDGING THE RAIL IN PLACE.



THE RAIL REMOVAL TOOL UTILIZES THE VIBRATION CREATED BY A COMMERCIAL HAMMER DRILL TO LOOSEN AND REMOVE THE CORROSION PRODUCTS FROM THE ANCHOR SOCKET. AFTER REMOVING THE RAIL, THE DRAIN HOLES IN THE ANCHOR SHOULD BE OPENED TO AVOID FURTHER PROBLEMS DOWN THE ROAD.

## SOLUTION

PART #  
RRT  
RAIL REMOVAL TOOL



PART #  
RRT-Chisel



Vibrate



Remove



Clean



AVAILABLE THROUGH DISTRIBUTION NATIONWIDE  
1871 ASPEN CIRCLE PUEBLO, COLORADO 81006 PHONE 800-748-2770 FAX 719-544-3106  
VISIT US AT [WWW.PERMACASTONLINE.COM](http://WWW.PERMACASTONLINE.COM)